

# Gender and STEM subjects at the University of Iceland

IUPAC's Global Women's Breakfast

Women in Science – Reykjavík

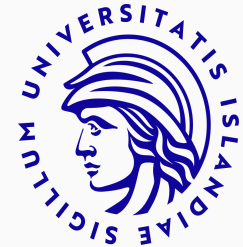
---

Anna Helga Jónsdóttir

School of Engineering and Natural Sciences - University of Iceland

11th of February 2025

# About me



- BS in meachanical and industrial engineering.
- MS in applied mathematics.
- PhD in statistics.

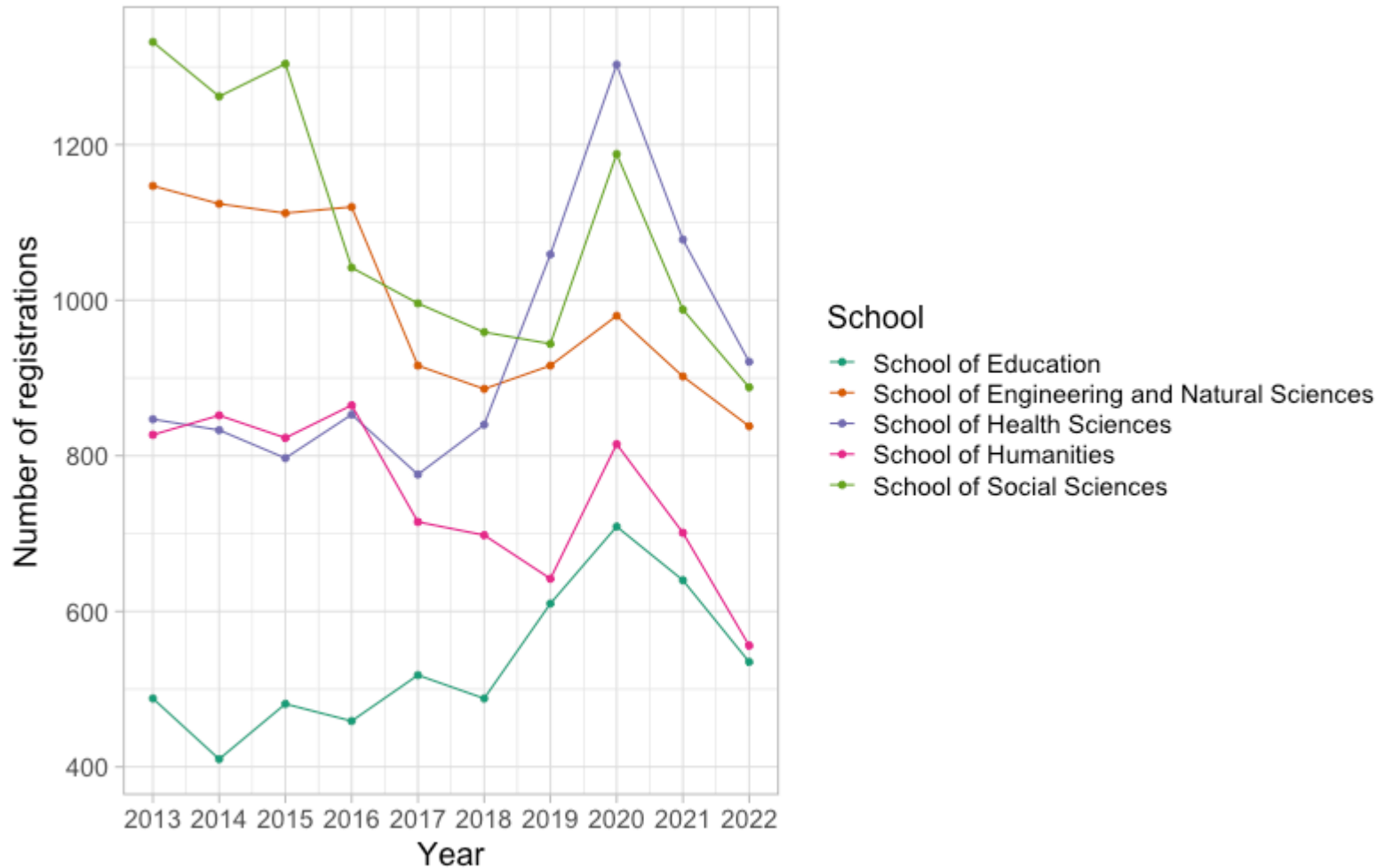
\

- Teaching and doing research at DTU and UI.
- Consulting work for various companies and institutions.

# Registrations at the UI

	2013	2014	2015	2016	2017	2018	2019	2020	2021	2022	n	proportion
School of Education	488	410	481	459	518	488	610	709	640	535	5338	0.124
School of Engineering and Natural Sciences	1147	1124	1112	1120	916	886	916	980	902	838	9941	0.231
School of Health Sciences	847	833	797	853	776	840	1059	1303	1078	921	9307	0.217
School of Humanities	827	852	823	865	715	698	642	815	701	556	7494	0.174
School of Social Sciences	1332	1262	1304	1042	996	959	944	1188	988	888	10903	0.254

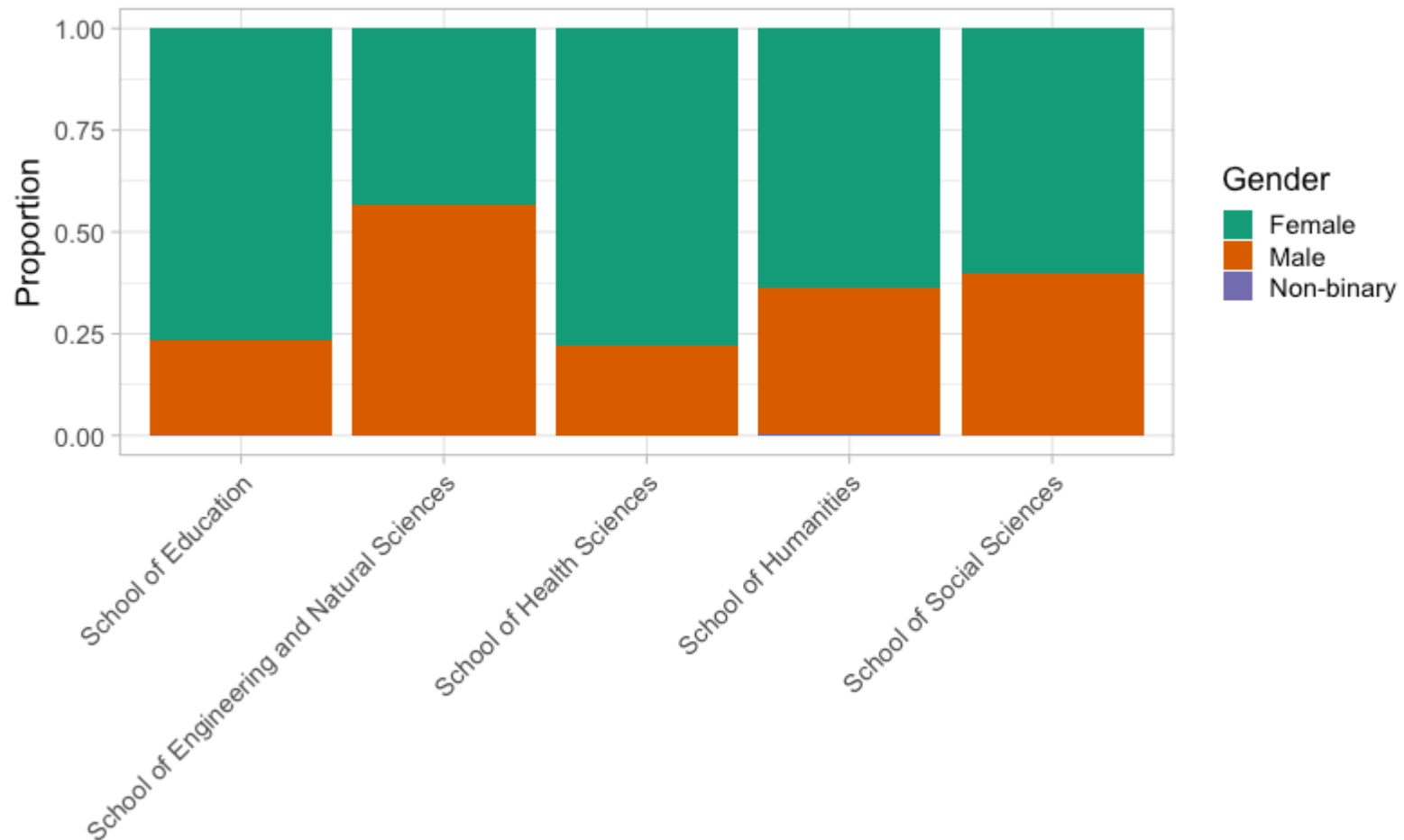
# Registrations at the UI



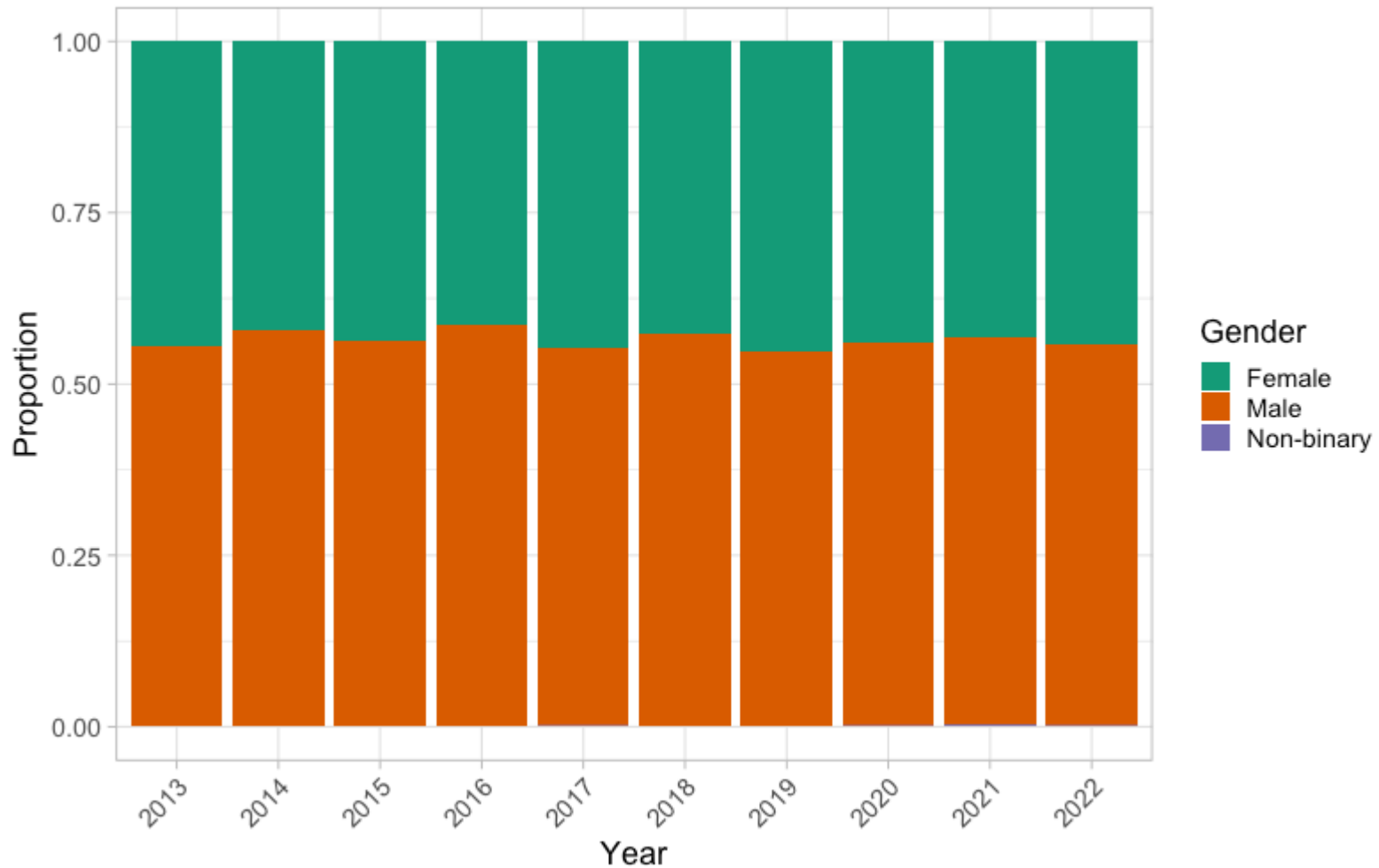
# Gender - the schools

	<b>Female</b>	<b>Male</b>	<b>Non-binary</b>
	(N=27036)	(N=15905)	(N=42)
School			
School of Education	4097 (15.2%)	1236 (7.8%)	5 (11.9%)
School of Engineering and Natural Sciences	4322 (16.0%)	5614 (35.3%)	5 (11.9%)
School of Health Sciences	7259 (26.8%)	2047 (12.9%)	1 (2.4%)
School of Humanities	4784 (17.7%)	2686 (16.9%)	24 (57.1%)
School of Social Sciences	6574 (24.3%)	4322 (27.2%)	7 (16.7%)

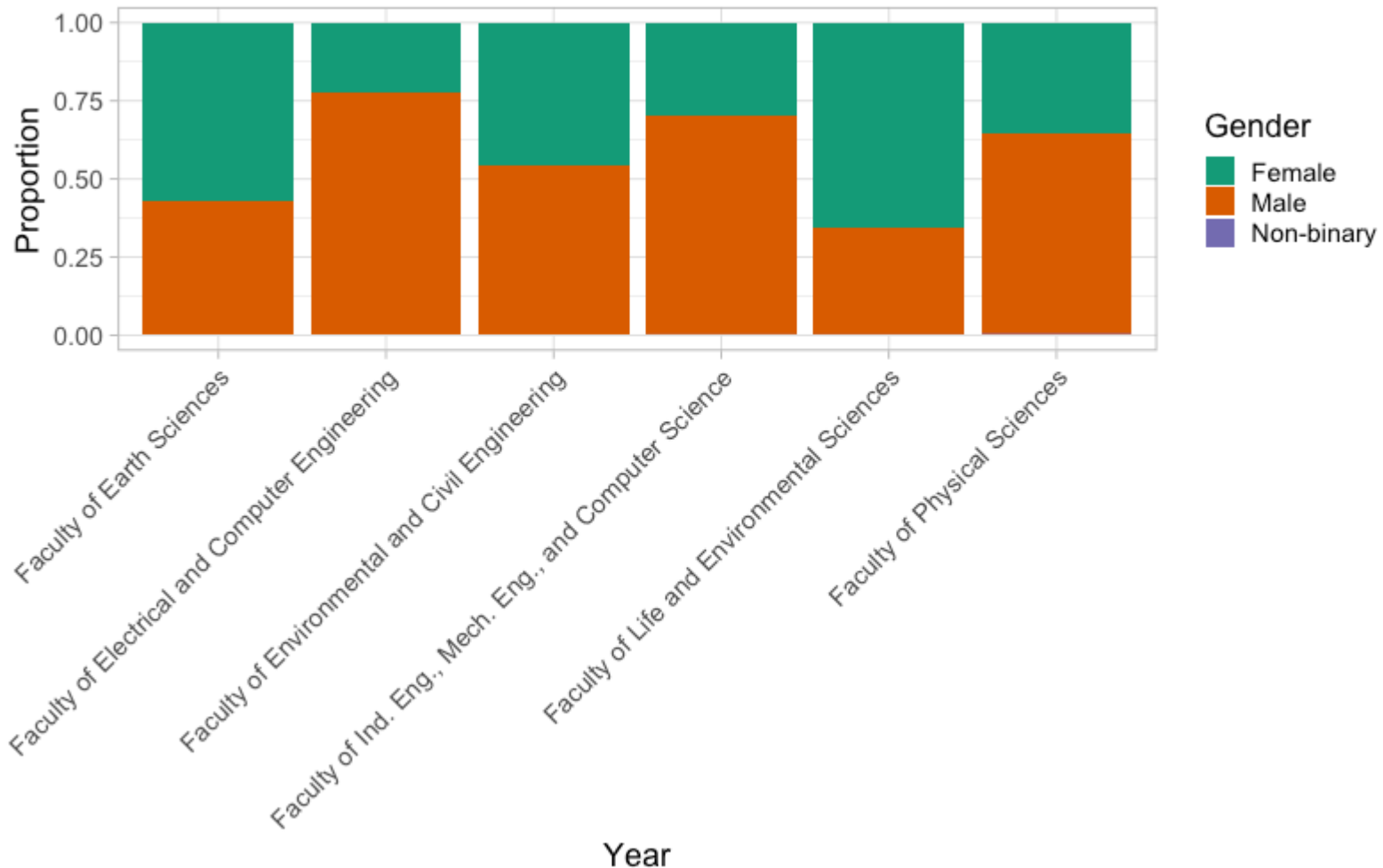
# Gender - the schools



# Gender - SENS



# Gender - SENS





# Why?

- Gender stereotypes and social norms.
- Lack of role models and mentors.
- Educational environment and pedagogy.
- Self-perception and confidence.

Thanks!